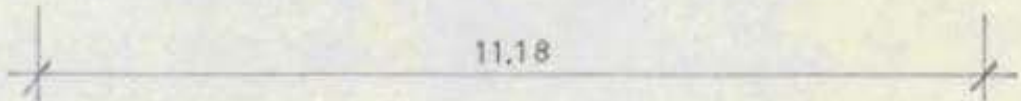
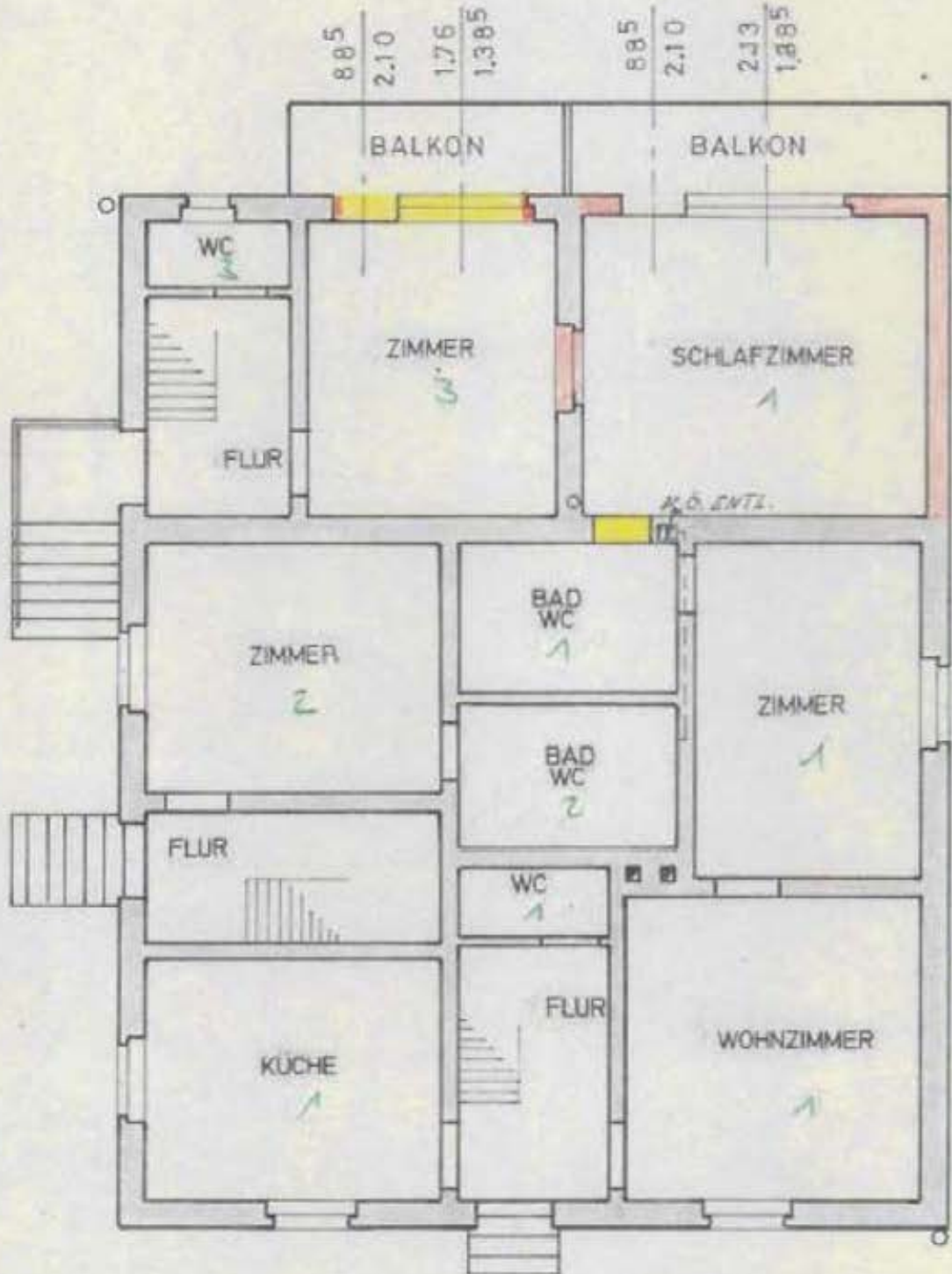
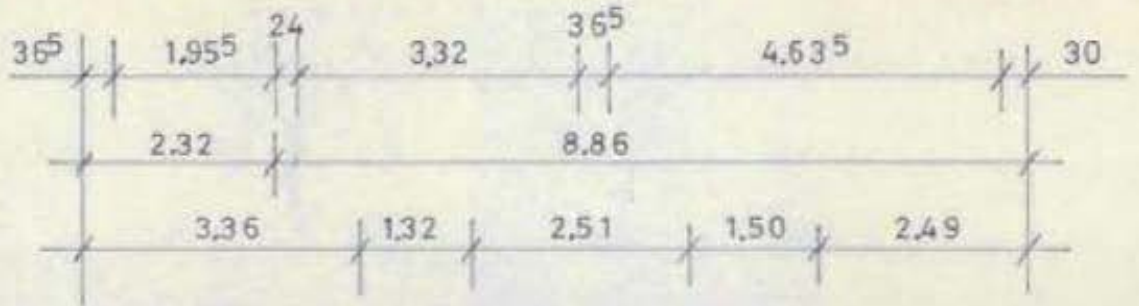


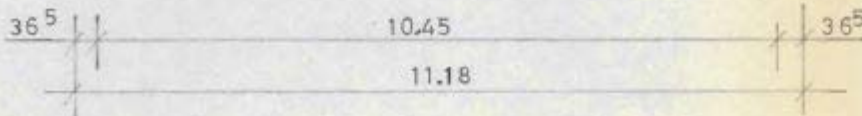
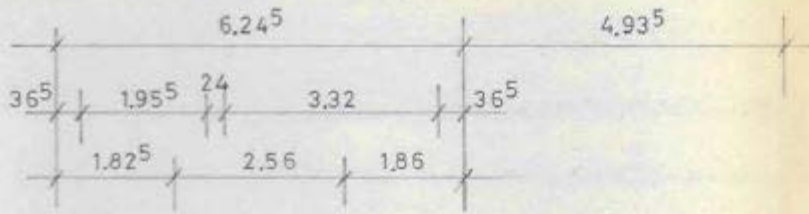
$$3.93 \times 5.49 \times 2.10 = 53.94$$

$$4.835 \times 4.31 \times 5.45 = 115.92$$

KELLERGESCHOSS



ERDGESCHOSS



OBERGESCHOSS

Bauaufsichtl

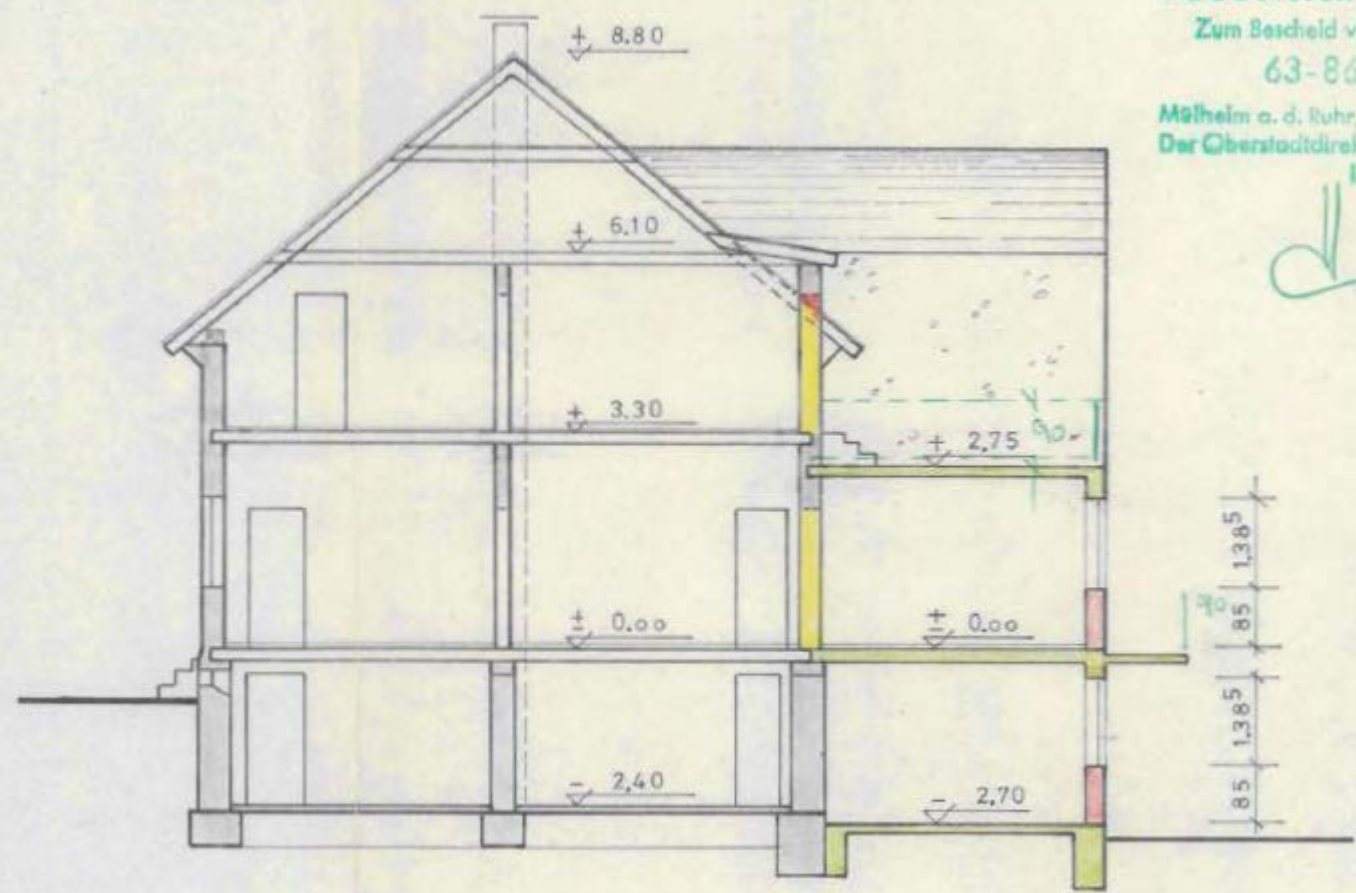
Zum Bescheid vom

63-86. 6

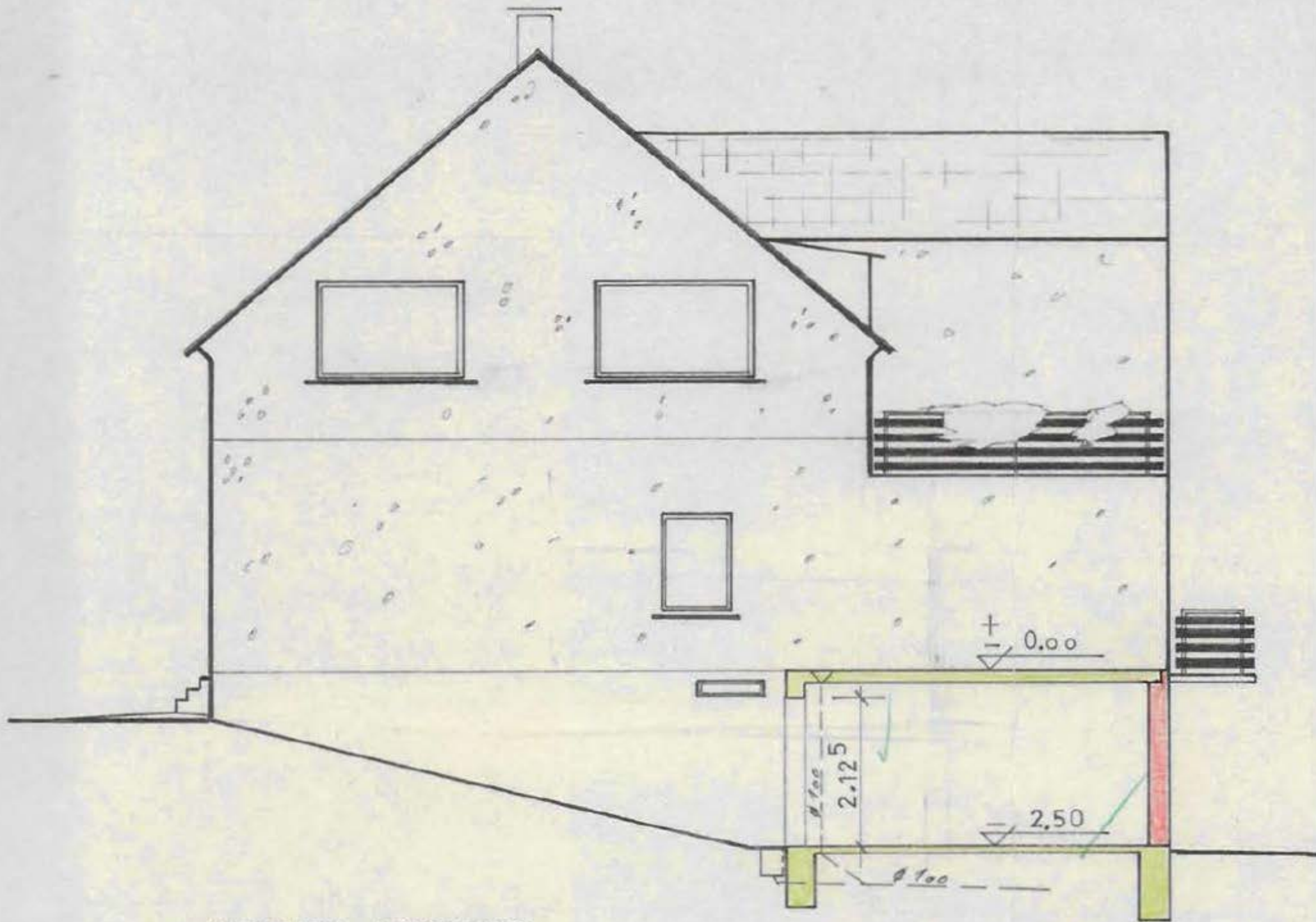
Mülheim a. d. Ruhr, den

Der Oberstadtdirektor

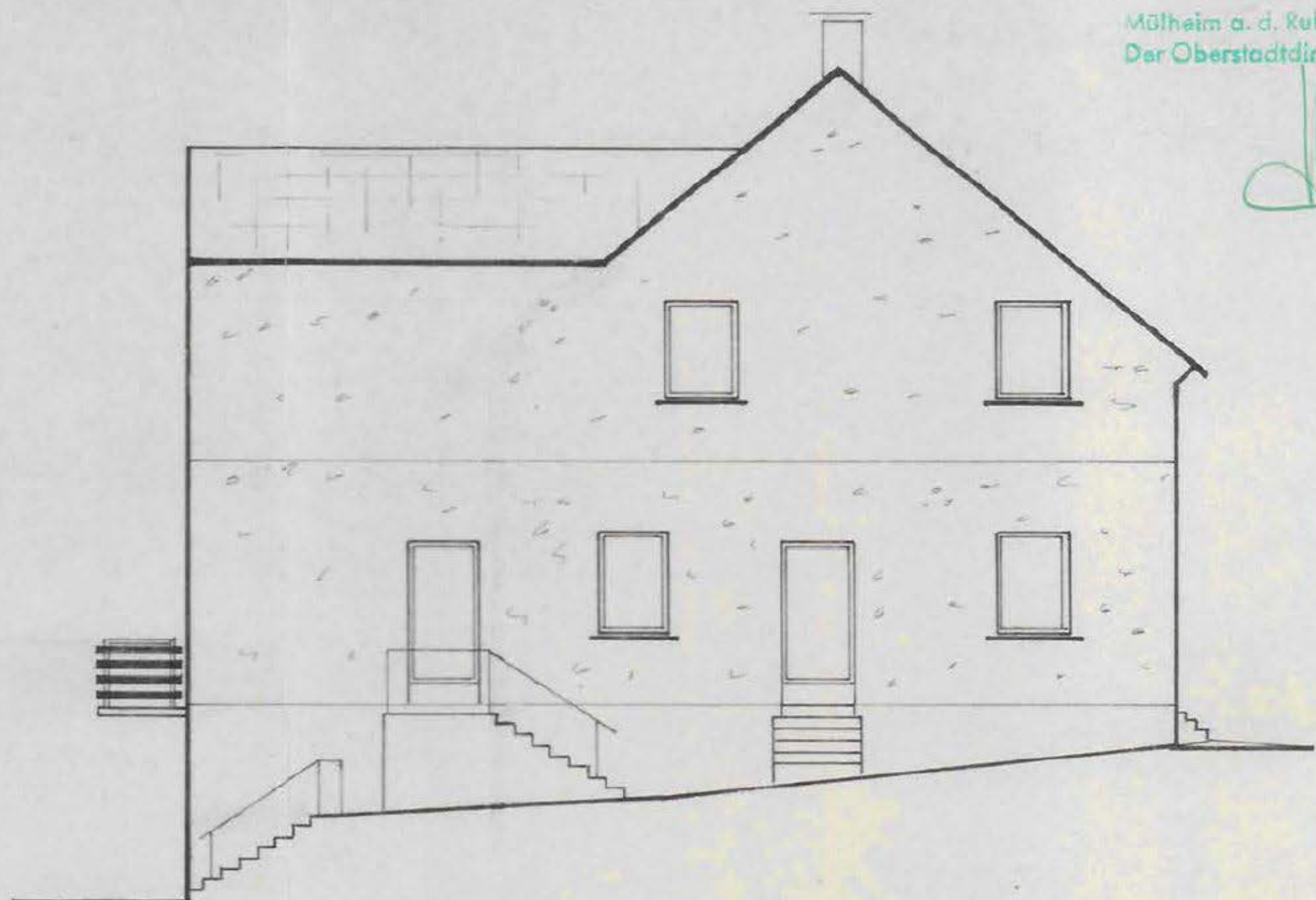
L.A.



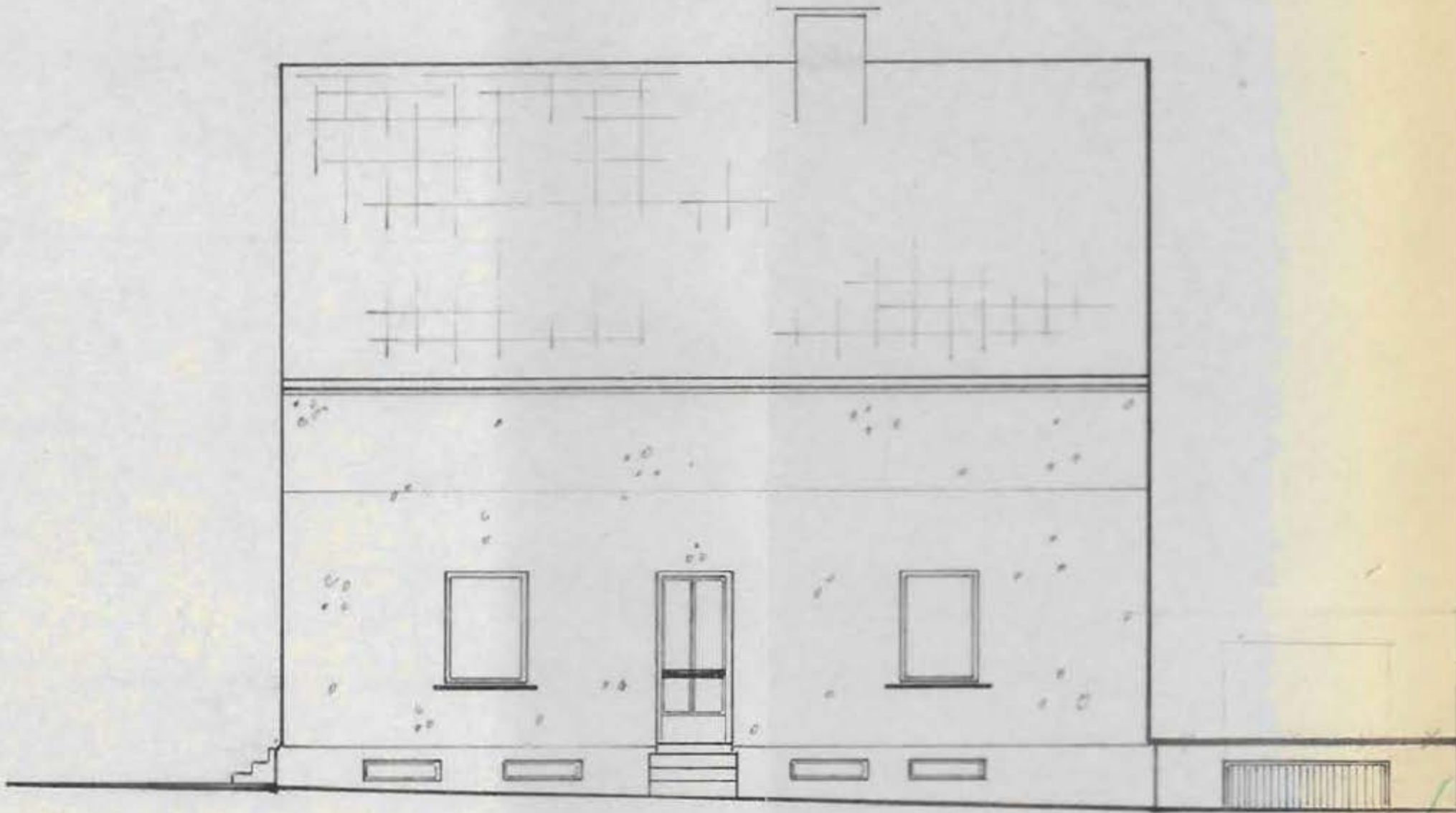
SCHNITT



SEITEN-ANSICHT



SEITEN-ANSICHT



STRASSEN - ANSICHT